



TECNOVE

"Where ever you need us"

FIELD HOSPITAL



TECNOVE

TECNOVE is a company founded and established in Herencia, Ciudad Real, that carries out its activity in different sectors. Its work and evolution are marked by quality, innovation and customer service.

Its main lines of business are:



Vehicles

Design, manufacture and maintenance of bodyworks and special vehicles



Containers

Design and manufacture of containers and shelters for all types of uses and activities



CSC | Catering · Services · Construction

Construction of modular facilities, maintenance, cleaning, catering, etc



Forestry management

Advice and management of agricultural holdings. Forestry planning and operation

TECNOVE

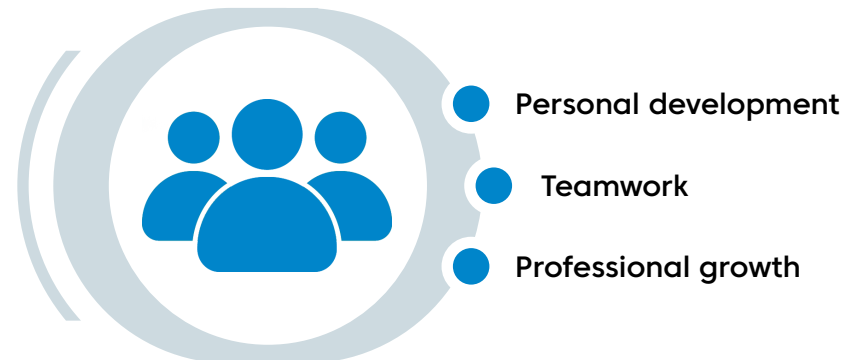
BUSINESS GROUP

TECNOVE is part of a trade group made up of 10 companies that carry out their activities together in the **TECNOVE Business Group**.

This adds to the business lines image and furniture solutions, telecommunications, energy and remarketing.



**People,
the epicentre
of our culture
and principles**



CSC Solutions · Construction

Within the construction sector, **TECNOVE** has **extensive experience in designing, building and applying the modular construction concept** for field hospitals for civil or military use, canteens or temporary accommodation.

The construction is carried out in such a way as to guarantee a **highly efficient and optimised use of the equipment**, adapted to the purpose of the establishment and which also includes plumbing, sanitation, electricity, lighting and air-conditioning installations.

Our **most demanded solutions**, in terms of construction, are the following:

Field hospitals



Camps & life bases



Reforms & civil works





Field Hospitals

TECNOVE provides the **manufacture of tailor-made field hospitals**, with the necessary medical equipment and furniture to be able to offer health care on site.

Its **quick and easy deployment** provides medical care in **areas affected by natural disasters or fighting** where there are insufficient health services to serve the population.

The medical team will be able to make use of the **highest quality medical facilities and equipment** adapted to the demanding conditions of the duty station.



Especifications

Field Hospitals

Structure

The base structure of the hospital consists of an integrated support frame made of anodised aluminium and galvanised steel profiles, connected with steel or aluminium inserts



Sheath

The sheath consists of supporting fabric made of the highest quality PVC with high fire resistance and fire retardancy, covering the side walls and gables



Connections

The different modular tents and containers that make up the hospital are connected through corridors, forming a hygienic-sufficient system that guarantees the most suitable sanitary conditions





Constructive details

Field Hospitals

Canvas

Side walls fitted with windows including opaque roller shutters.
Moulded-in covers on gable walls.
Zippered roll-up doors.

Floor

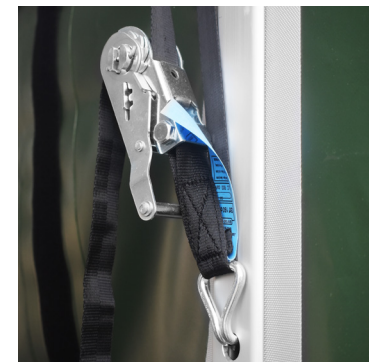
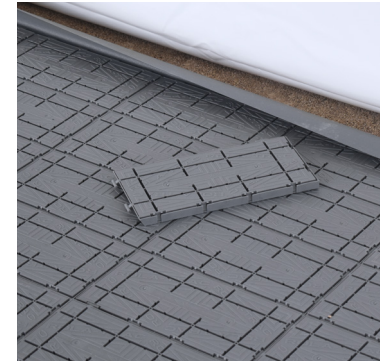
One-piece PVC textile base.
High impact ABS modular solid base.

Configuration

The necessary tools and manuals are provided for the installation of the hospital.

Repair Kit

A repair kit is included with different elements to keep the installations in the best conditions.





Medical area

Field Hospitals

Field hospitals **can be equipped** with furniture and medical equipment **related to the medical services to be offered.**

The most requested specialties are the following:

Hospitalization

Emergency

ICU

Pharmacy

Sterilization

Laboratory

Surgery

General Medicine

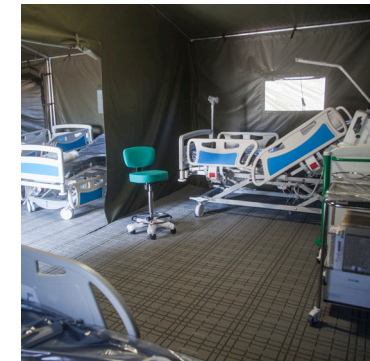
Dentistry

Pediatrics

Radiology

Traumatology

Gynaecology and Obstetrics



Auxiliary Areas

Field Hospitals

To ensure the optimal functioning of the hospital, medical areas can be complemented by **ancillary areas that provide basic services:**

Canteen

Kitchen

Warehouse

Laundry

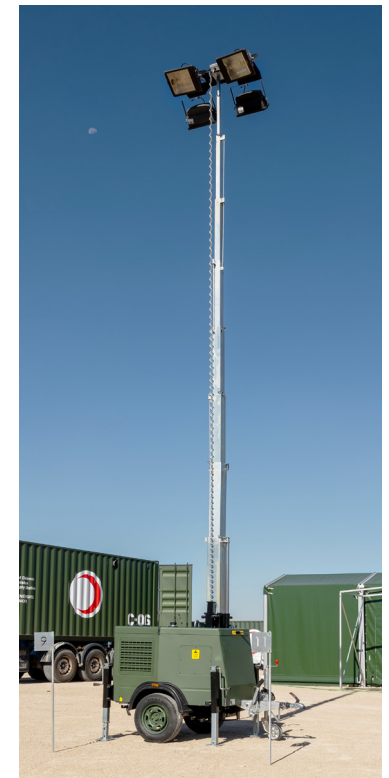
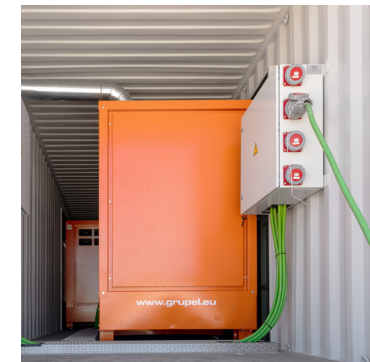
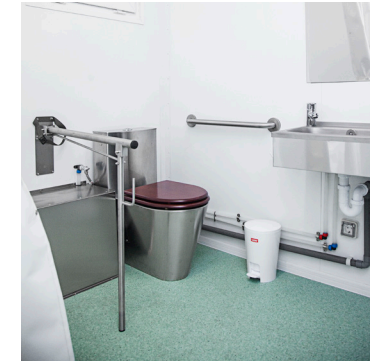
Waste management

Water treatment plant

Lighting towers

Generator sets

Catering, cleaning, maintenance, management, security and welfare services.

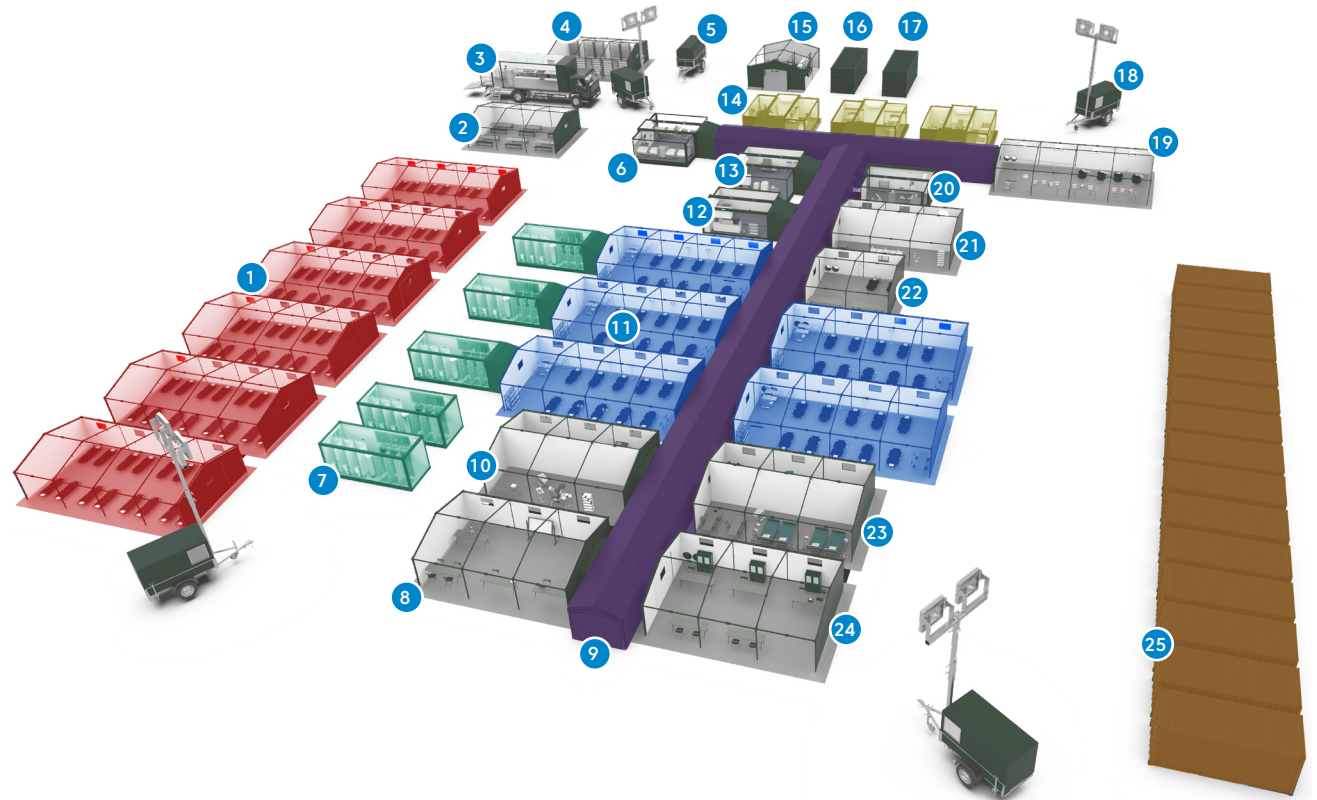


Layout

Field Hospitals

The layout of the hospital is a very **important factor** when dealing with one or more emergency situations. Depending on how it is laid out, patient care will be more or less flexible.

That is why **we offer the opportunity to provide advice on the layout of the hospital** so that it adapts to your requirements, makes the most of the space and is a fully functional space.



- 1 · Rooms
- 2 · Canteen
- 3 · Kitchen
- 4 · Food store
- 5 · Water treatment
- 6 · ICU
- 7 · Baths
- 8 · Telecommunications
- 9 · Hall

- 10 · Dentistry/ Pediatrics
- 11 · Hospitalization
- 12 · Sterilization
- 13 · Laboratory
- 14 · Surgery
- 15 · Laundry
- 16 · Waste management
- 17 · Gas generation
- 18 · Lighting Tower

- 19 · Emergency
- 20 · Radiology
- 21 · Pharmacy
- 22 · Traumatology
- 23 · General Medicine/
Gynecology and obstetrics
- 24 · Administration Office
- 25 · Warehouse

Additional hospital add-ons

Field Hospitals

The tents offer the **possibility of being complemented with expandable, standardised and/or customised containers.**

In addition, mobile medical units and/or ambulances can also be incorporated to provide a complete medical service.



TECNOVE

“Wherever you need us”

April 2023

For more information please do not hesitate to contact us,
we will be pleased to help you



www.tecnove.com · tecnove@tecnove.com